



**THERMOPLASTIKI**

[www.thermoplastiki.gr](http://www.thermoplastiki.gr)



## PRODUCT CATALOGUE **ALUMINUM FRAMES**

---

INWARD / OUTWARD OPENING | SLIDING | LIFTING / SLIDING  
ENTRANCES | ROTATING | MECHANISMS



# TABLE OF CONTENTS

introduction	4
inward / Outward Opening	6
Sliding	10
Lifting / Sliding	14
Entrances	18
Rotating	26
Mechanisms	27
Characteristics	28







## ALUMINUM FRAMES

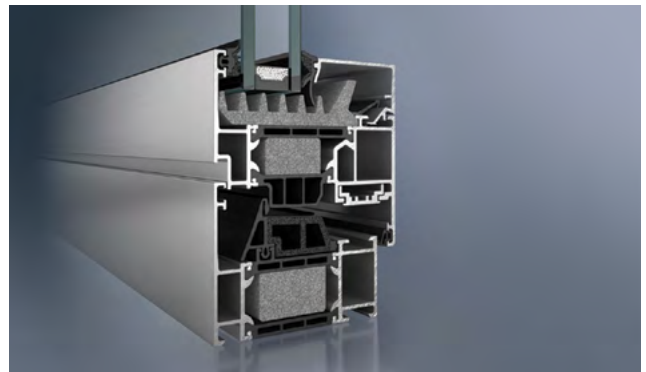
We offer integrated and reliable aluminum frame solutions. International certifications of raw materials and the manufacturing and application processes ensure high quality and excellent results, while the wide choice of aluminum colours, metal faces and innovative design are the components of our unique aesthetic quality.

Our wide range of types and applied aluminum frame styles helps you find the perfect solution to meet your own needs.



SCHÜCO  
**AWS 90.SI**

High insulation thermal break window system, with face width of 107mm. The extended thermal insulation zone offers excellent energy saving. This system's energy profile is complemented by top sealing performance, featuring high wind pressure resistance, air and water permeability; it is an excellent solution for upgrading a place to Passive House.

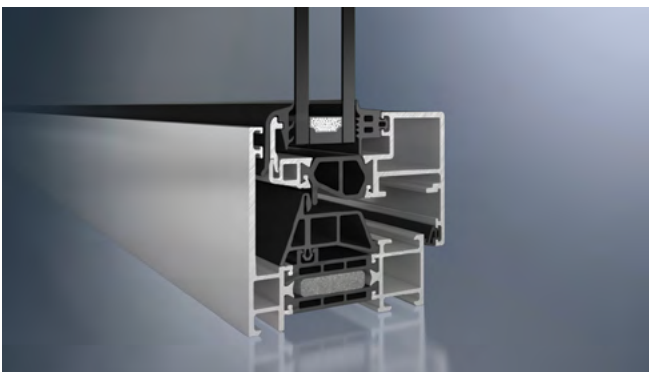


SCHÜCO  
**AWS 75.SI**

Featuring a thermal insulation zone that can offer great results, the high insulation thermal break window system SCHÜCO AWS 75.SI has a total face width of 107mm and is an important energy profile, that is complemented by the sealing properties, both against the wind and moisture, as well as high resistance and durability.







**SCHÜCO  
AWS 70.BS.HI**

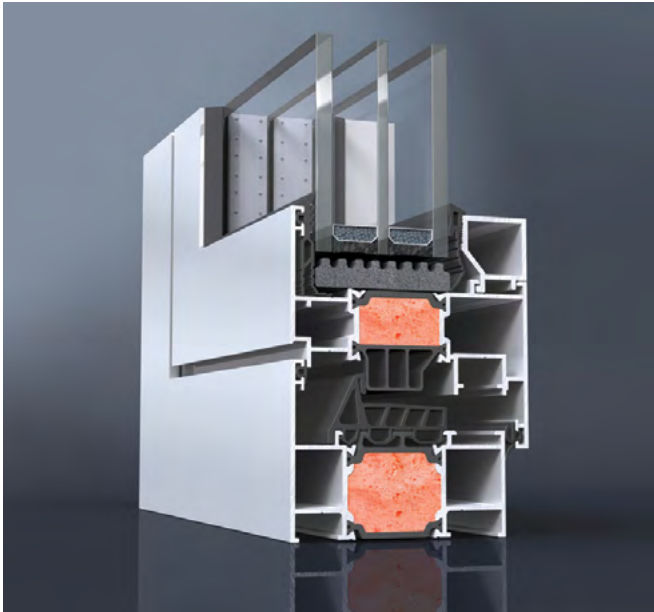
High insulation thermal break window system, with total face width of 91mm.

The frame's comfortable design allows for a clear external side which hides the profile's sheet and makes it extremely invisible.



**SCHÜCO  
AWS 65**

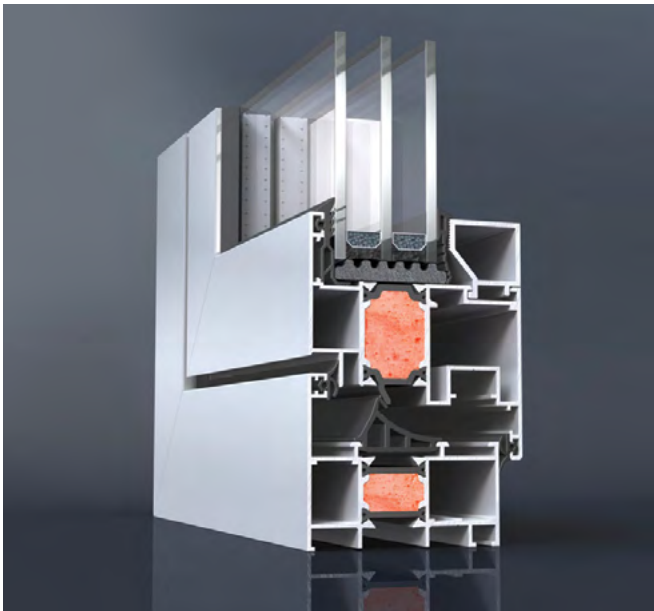
High insulation thermal break window system, with total face width of 107mm. A strong aluminum construction with high wind pressure resistance, air and water permeability. SCHÜCO AWS 65 frame features an extended thermal insulation zone, thanks to its specially designed thermal break chambers, thus creating a shield against energy losses.



ELVIAL  
**XCLUSIVE 86i2 MULTILOCK**

High insulation thermal break window system, with total face width of 110mm.

The casement features an additional three-level thermal insulation zone, with a foam core of i2 technology that magnifies the isothermal curves at the casement's profile and minimises heat transfer, while it also meets the requirements for maximum thermal insulation, soundproofing, security and impeccable sealing.

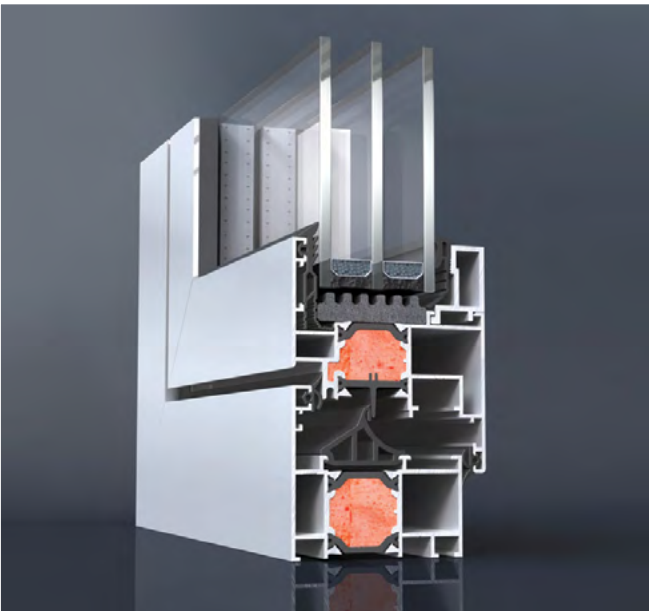


ELVIAL  
**5600i2 MULTILOCK**

High insulation thermal break window system, with total face width of 106mm.

The foam core of i2 technology is at the centre of the breaking thermal insulation zone, magnifying the frame's energy performance and creating a high-density obstacle against losses.





**ELVIAL  
MULTILOCK 4600i2 MULTILOCK**

High insulation thermal break window system, with total face width of 101mm.

Thanks to the smart i2 technology, the frame features excellent thermal-insulation properties, while the advanced foam core for thermal breaking at the casement's profile protects against any losses.



## SCHÜCO ASS 39 PD.NI

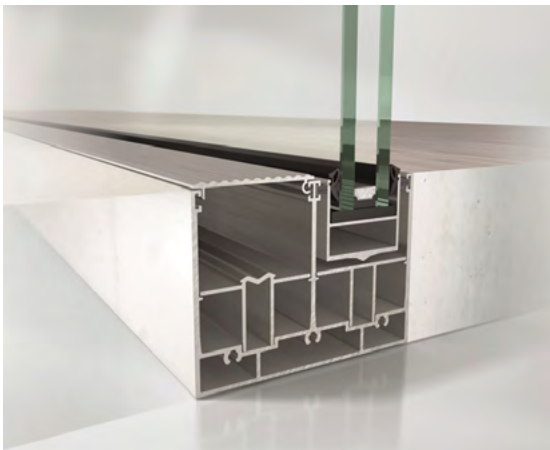
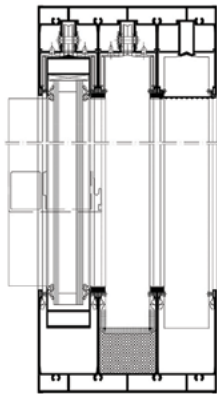
Sliding French door system with zero face width.

A flexible solution offering many configuration options, such as double or triple guide rail and the opening 90° corner option.

Thanks to an innovative frame fitting system, the formation of the corner is made only via the moving parts of the frame and with perfect stability, offering a visually clean image of incomparable aesthetic design, free from any third materials for the fitting.











### **Zero face width**

The purity of its design is the major challenge that Schüco ASS 39 PD.NI wants to overcome. The system's casement allows for hidden installation. Thus, as soon as it is installed either on the outside or on the inside, the frame allows for a free and wide view.

### **Triplex and energy structure**

Schüco ASS 39 PD.NI frame is constructed only with the addition of double glass pane of triplex energy structure, thus enhancing protection and energy saving, by adding the features of the solar more technology of Thermoplastiki's glass panes.





50+ Colours available



Energy glass pane option

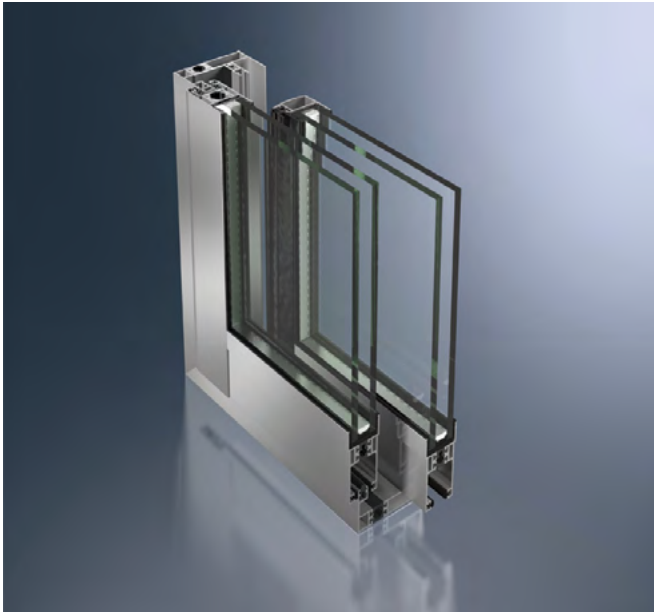


Double glass pane option



Triplex glass pane option

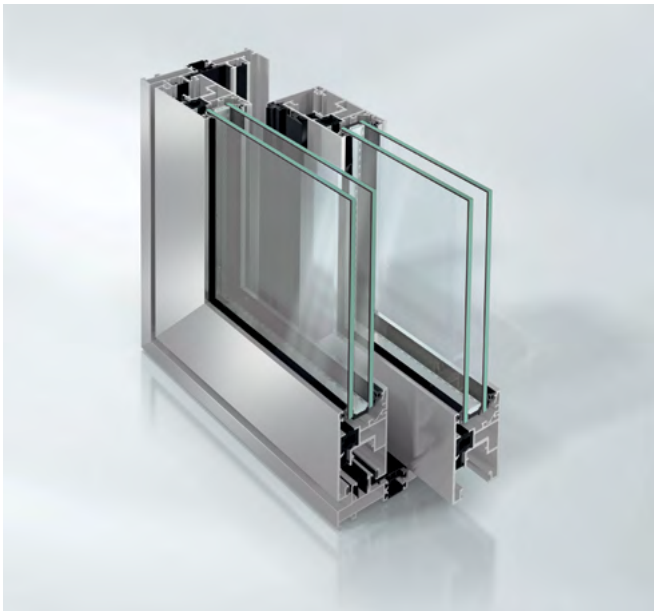




SCHÜCO  
**ASS 32 SC**  
(Sliding)

Thermal break French door sliding system, with total face width of 92mm.

A flexible solution offering many configuration options, such as double or triple guide rail and INOX rolling.

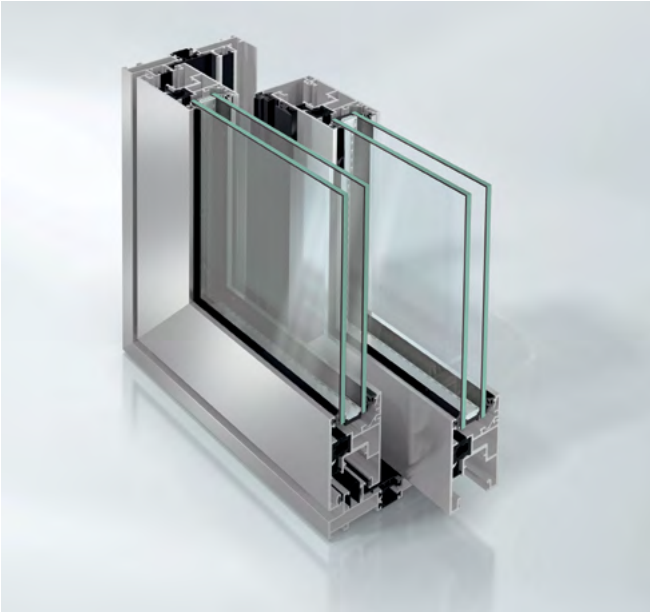


SCHÜCO  
**ASS 50**  
(Sliding)

Thermal break sliding French door system, with total face width 112mm, with sheet 150kg, and sheet 300kg with total face width 124mm.

A flexible solution offering many configuration options, such as double, triple or quadruple guide rail and INOX rolling.

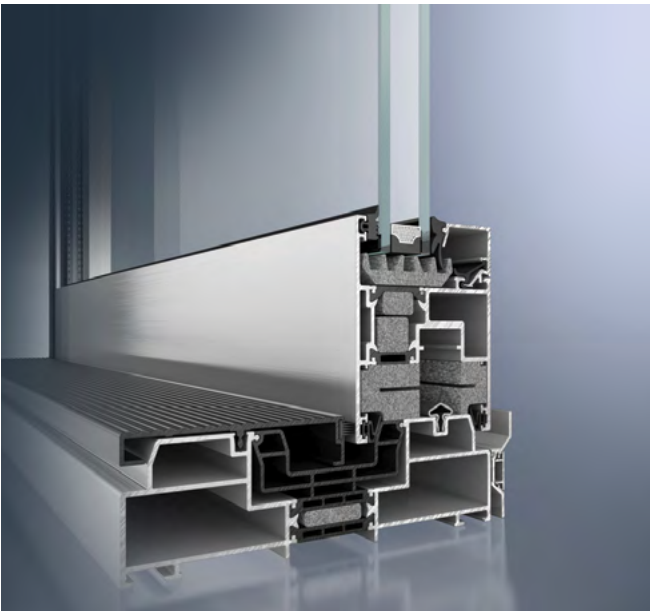




SCHÜCO  
**ASS 50**  
(Lifting/Sliding)

Thermal break lift/sliding system, with total face width 112mm, with sheet 150kg, and sheet 300kg with total face width 124mm.

A flexible solution offering many configuration options, such as double, triple or quadruple guide rail and INOX rolling.



SCHÜCO  
**ASS 70.HI**  
(Lifting/Sliding)

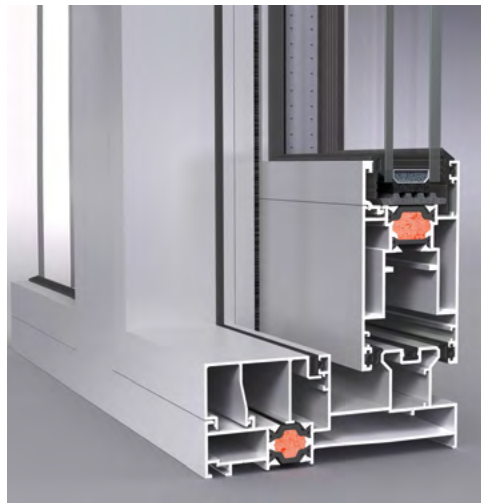
Thermal break heavy duty lifting/sliding system, with total face width of 137mm.

A flexible solution offering many configuration options, such as double or triple guide rail and inox rolling.

**Sliding**







**ELVIAL  
6700i2  
(Lifting/Sliding)**

Thermal break lifting/sliding system, with total face width of 122mm.

The casement can be applied as a simple sliding system or as a lifting/sliding system.



**SCHÜCO  
AWS 65 PASK**

High insulation thermal break lift/sliding system window system, with total face width of 117mm.

Excellent practicality combining sliding opening and hung position.



**SCHÜCO  
ASS 70 FD**

High insulation thermal break folding French doors system, with total face width of 131mm.

The special construction of the folding mechanism allows quick and silent sheet movement and offers the option of low plinth construction and opening 90° corner option.



# SCHÜCO DOOR CONTROL SYSTEM







SCHÜCO DCS is an innovative and fully integrated residential door access control system that can be adjusted and programmed to meet exactly the individual needs of its point of fitting. The combination of functionality and style leads to an excellent final result that is the best choice when it comes to access and walkability control systems for residential doors.

Regarding the interaction and communication with the user, SCHÜCO DCS includes options such as camera, microphone and speaker, bell frame, number frame, movement sensor, approaching sensor and LED lights; as far as walkability control is concerned, it includes options such as access cards recognition system, keyboard for typing the password, as well as fingerprint recognition system. Of course, the traditional key and emergency exit are there too.



Fingerprint option



Microphone option



Camera option



Speaker option



# SCHÜCO ADS 90 SimplySmart

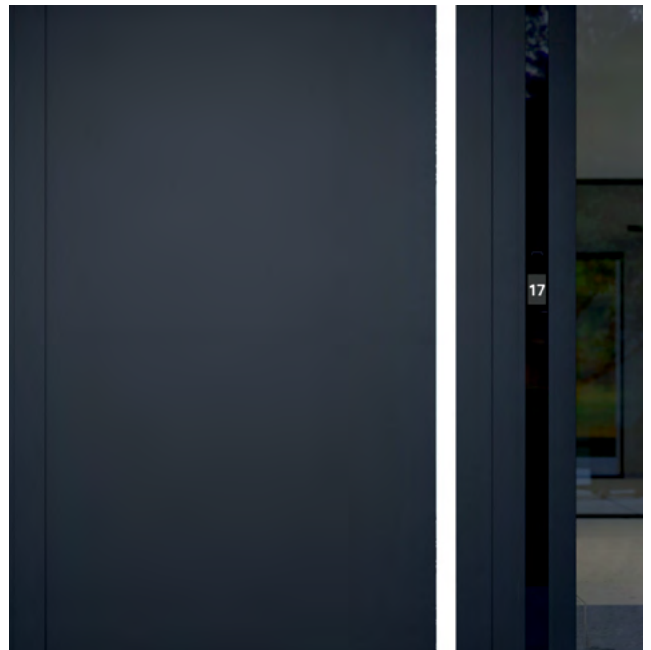
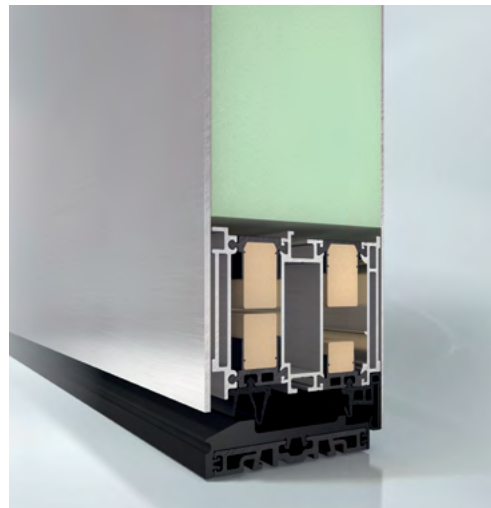


High insulation double divided thermal break exterior door system, with total face width of 170mm and zero depth difference (coplanar).

The unique security features are complemented by the top sealing performance and the strong burglary protection, while the double divided thermal break ensures high thermal insulation performance.





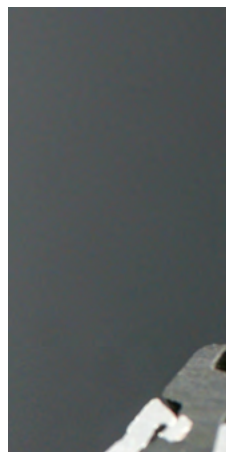


# SCHÜCO ADS 75 SimplySmart

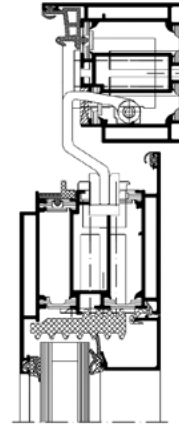


High insulation thermal break exterior door system, with total face width of 170mm and zero depth difference (coplanar).

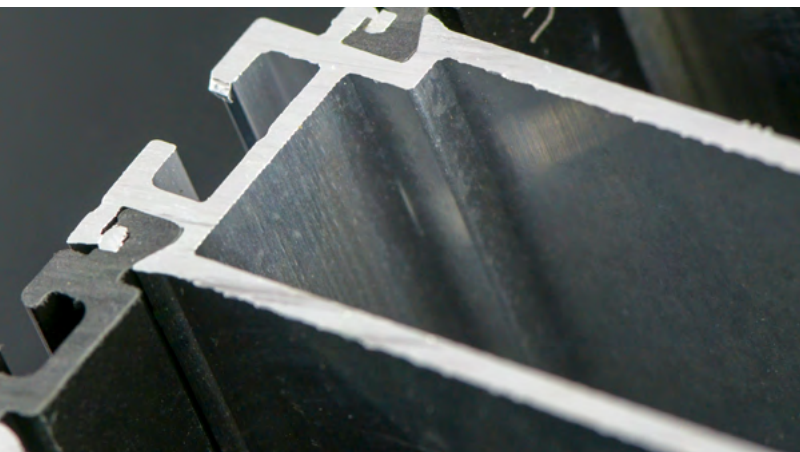
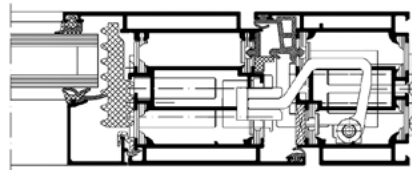
The casement disposes of double divided thermal break with excellent performance when it comes to thermal insulation applications. The unique security features are complemented by the significant sealing performance and the strong burglary protection, while visible and hidden hinges may be applied on the sheet.

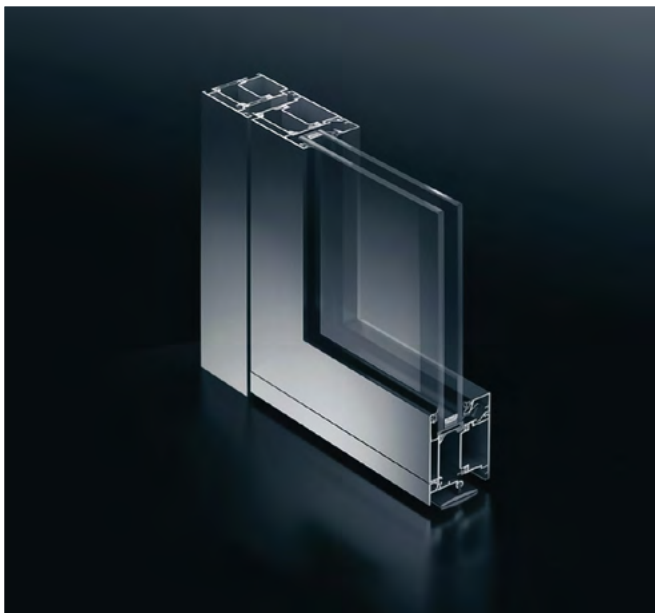
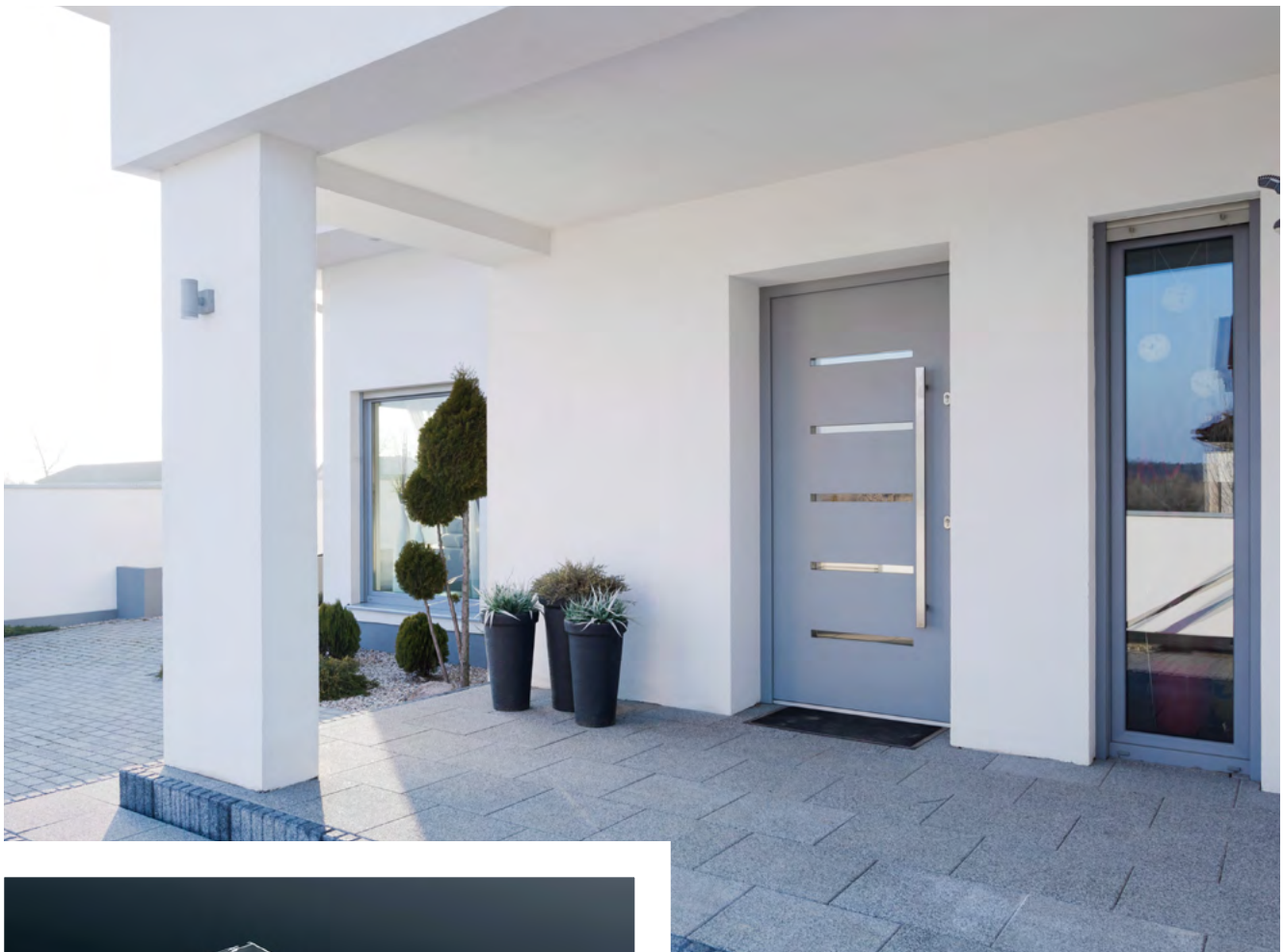






Hidden hinge with an opening angle up to 100°



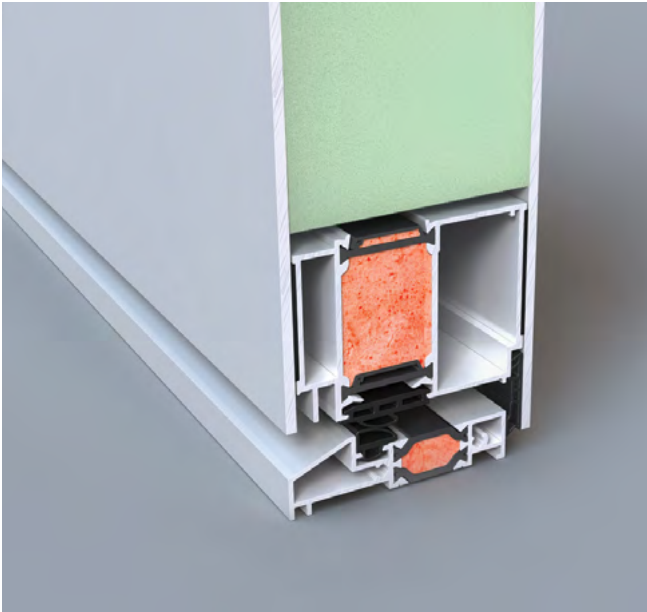


### SCHÜCO **ADS 65 HD**

High insulation thermal break exterior door system, with total face width of 144mm.

Its unique thermal-insulation, soundproofing and burglary protection features are complemented by the excellent burglary protection ensured by the SCHÜCO five-point inox lock. The door's functionality can be upgraded via compatible additions, such as hidden hinges, panic exit tools, panic exit button, wireless access control, coplanar rosettes and multiple combining applications.





ELVIAL  
**XCLUSIVE 88i2**  
(Entrance)

Exterior door thermal break casement, with face width of 77mm.

ELVIAL XCLUSIVE 88 i2 exterior door three-level thermal break system is a new solution proposed that changes things at its category. It integrates all thermal insulation, sealing and design benefits, combining them with the previous security and functionality applications.



ELVIAL  
**5600i2**

Thermal break exterior door system, with total face width of 150 mm.

The casement features an additional thermal insulation zone, with a foam core of i2 technology that magnifies the isothermal curves at the casement's profile and minimises heat transfer.

**Rotating**



**SCHÜCO  
AWS 75 SI**

High insulation thermal break rotating window system, with total face width of 156 mm.

The 180° rotation mechanism offers new architectural and functional solutions, for every point of application, even in case of big openings. The list of its unique features is complemented by its excellent thermal insulation, sealing, soundproofing and enhanced burglary protection performance.



**SCHÜCO  
AWS 65**

High insulation thermal break rotating window system, with total face width of 156 mm.

The 180° rotation mechanism offers new architectural and functional solutions, for every point of application, even in case of big openings. The list of its unique features is complemented by its excellent thermal insulation, sealing, soundproofing and burglary protection performance.





## SCHÜCO **SimplySmart**

Schüco SimplySmart fittings make it possible to meet all modern architectural and functional requirements of your space.

They feature cutting-edge mechanic fitting tools, fully integrated, with opening angles up to 180°.



## SCHÜCO **TipTronic**

Schüco TipTronic is the first concealed electromechanic fitting and functionality system that combines energy management, security building automations and comprehensive design.

Thus, the window becomes an integral part of the “smart” building and it significantly contributes to the exploitation of the energy potential of the building’s shell.








## CHARACTERISTICS OF **ALUMINUM FRAMES**







## TABLE OF CHARACTERISTICS ALUMINUM FRAMES

		 Thermal insulation	 Waterproofing index	 Burglary protection	 Soundproofing	 Strength index
INWARD/OUTWARD OPENING	SCHÜCO AWS 90.SI	5/5	5/5	4/5	5/5	4/5
	SCHÜCO AWS 75.SI	4/5	4/5	4/5	4/5	4/5
	SCHÜCO AWS 70.BS.HI	4/5	4/5	4/5	4/5	4/5
	SCHÜCO AWS 65	4/5	4/5	4/5	4/5	4/5
	ELVIAL XCLUSIVE 86i2 MULTILOCK	5/5	5/5	5/5	5/5	4/5
	ELVIAL 5600i2 MULTILOCK	3/5	4/5	4/5	3/5	4/5
	ELVIAL 4600i2 MULTILOCK	3/5	4/5	4/5	3/5	4/5
SLIDING	SCHÜCO ASS 32 SC	3/5	3/5	3/5	3/5	4/5
	SCHÜCO ASS 39 PD.NI	npd	3/5	npd	3/5	npd
	SCHÜCO ASS 50 (SLIDING)	3/5	4/5	4/5	4/5	4/5
LIFTING SLIDING	SCHÜCO ASS 50 (LIFTING - SLIDING)	3/5	4/5	4/5	4/5	4/5
	SCHÜCO ASS 70.HI (LIFTING - SLIDING)	4/5	4/5	4/5	4/5	4/5
	ELVIAL 6700i2 (LIFTING - SLIDING)	3/5	4/5	3/5	3/5	4/5
PASK / FOLDING	SCHÜCO AWS 65 PASK	4/5	4/5	4/5	4/5	4/5
	SCHÜCO ASS 70 FD (FOLDING)	4/5	4/5	4/5	4/5	4/5
ENTRANCES	SCHÜCO ADS 90 SIMPLYSMART	5/5	4/5	4/5	4/5	4/5
	SCHÜCO ADS 75 SIMPLYSMART	5/5	4/5	4/5	4/5	4/5
	SCHÜCO ADS 65 HD	4/5	4/5	4/5	4/5	4/5
	ELVIAL XCLUSIVE 88i2 (ENTRANCE)	npd	npd	npd	npd	npd
	ELVIAL 5600i2	npd	npd	npd	npd	npd
	ELVIAL 4600i2	npd	npd	npd	npd	npd
ROTATING	SCHÜCO AWS 75 SI	5/5	5/5	4/5	5/5	4/5
	SCHÜCO AWS 65	4/5	4/5	4/5	4/5	4/5

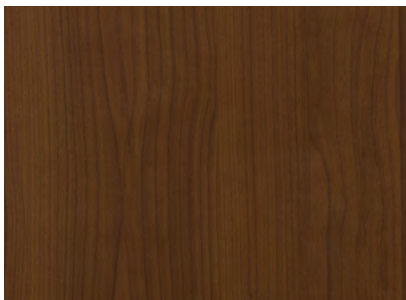




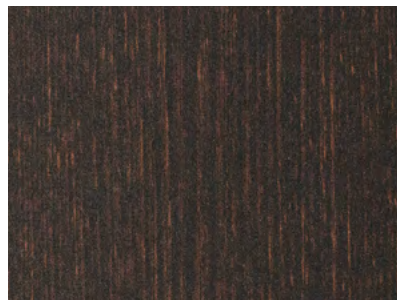
## WOOD DYE COLOUR RANGE **ALUMINUM FRAMES**

---

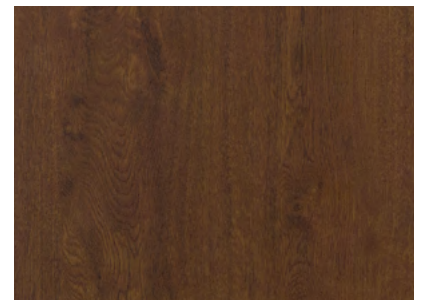
This is only indicative of the actual available colour range.



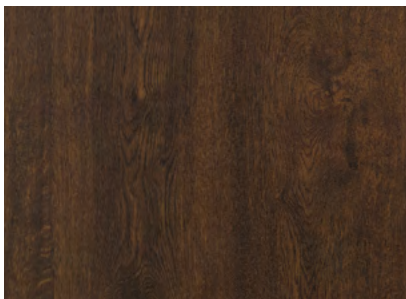
**B 1215**



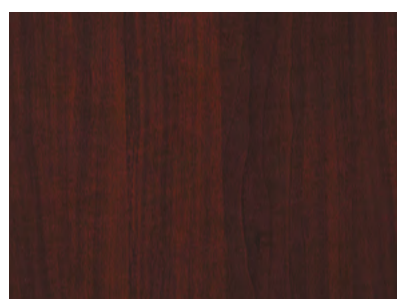
**B 1511**



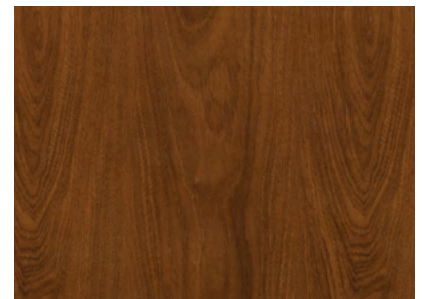
**B 1519**



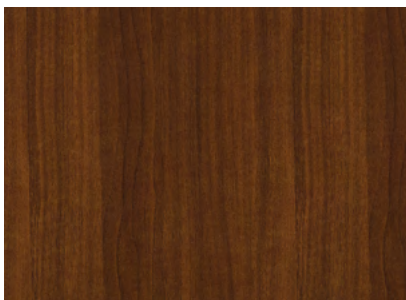
**B 1523 - Nussbaum**



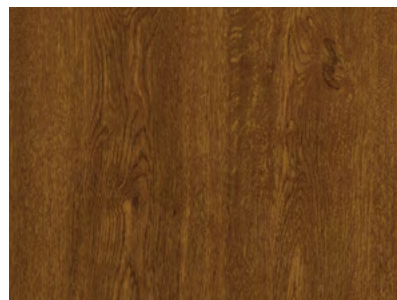
**B 1816**



**B 1918**



**B 1920**



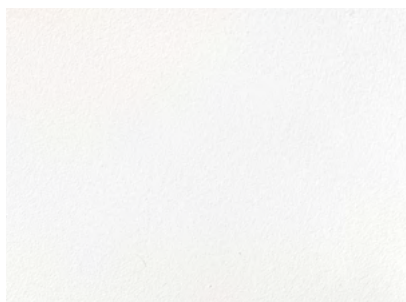
**B 2119 - Golden Oak**

Colours may be a bit different, due to printing.

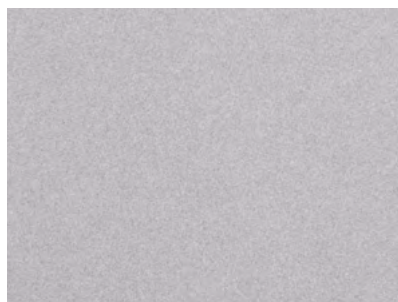
## AKZONOBEL INTERPON COLOUR RANGE **ALUMINUM FRAMES**

---

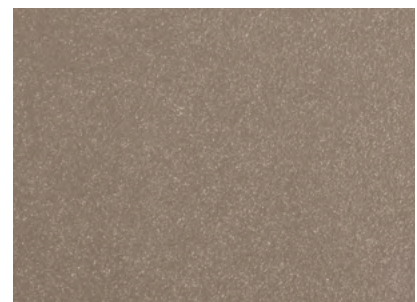
This is only indicative of the actual available colour range.



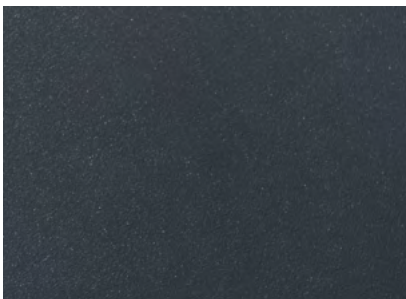
**RAL 9016 STRUCTURA**



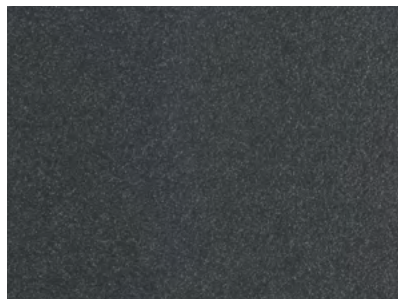
**GRAZALEMA 2525**



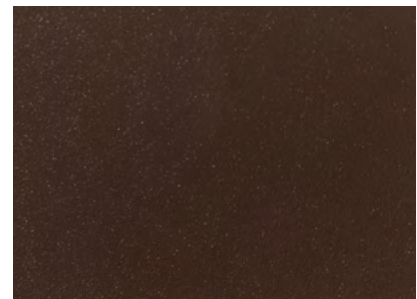
**GRIS 2500 SABLE**



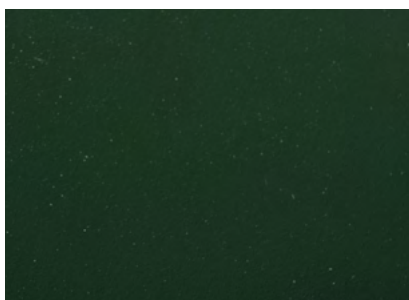
**RAL 7016 STRUCTURA**



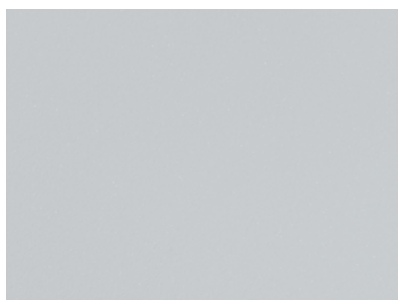
**BLUE 2600 SABLE**



**RAL 8014 STRUCTURA**



**RAL 6009 STRUCTURA**



**RAL 9006**



**RAL 9010 STRUCTURA**



Characteristics



**RAL 9005 STRUCTURA**



**PYRITE 2525**



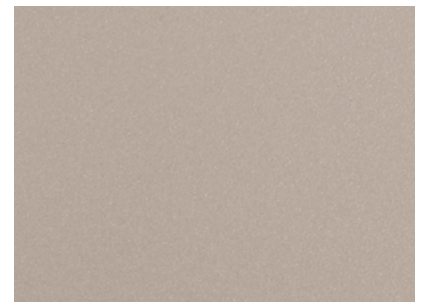
**NOIR 2100 SABLE**



**NOIR 2200 SABLE**



**NOIR 2300 SABLE**



**GRIS 2800 SABLE**



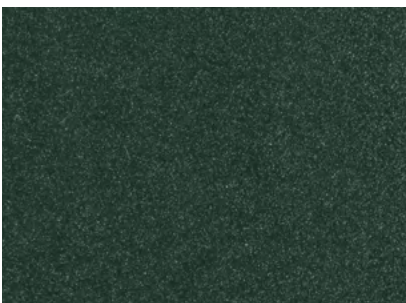
**GRIS 2900 SABLE**



**GRIS 2400 SABLE**



**BRUN 2650 SABLE**



**VERT 2500 SABLE**



**THERMOPLASTIKI S.A.**

Tel.: +30 2510 391 706

Fax.: +30 2510 391 087

Address: **Amigdaleonas - Kavala**

PC.: **640 12**

Email: **info@thermoplastiki.gr**

**f**: **thermoplastiki**

website:

**[www.thermoplastiki.gr/en](http://www.thermoplastiki.gr/en)**